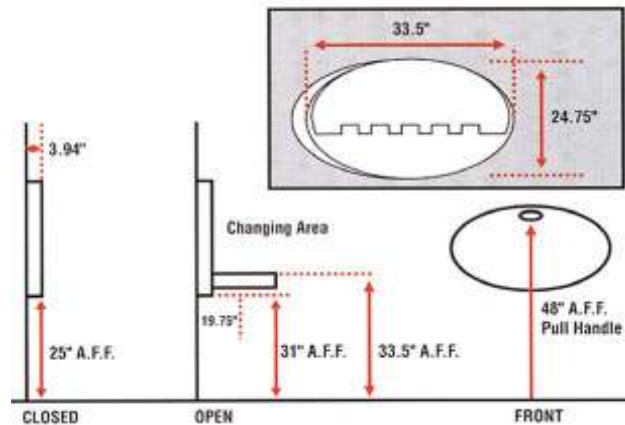




BS-313-400 – Ivory
BS-314-400 - Grey
High Impact ABS Plastic
Technical Data Sheet

Oval Baby Changing Station
Surface Mounted – Columbia Guard (Antimicrobial Agent)



SPECIFICATIONS: Unit shall meet ASTM F2285 Consumer Safety Performance Standards For Commercial Diaper Changing Stations. Unit shall be constructed from high-density polyethylene, which prohibits the retention of moisture and odors. Reinforced steel rods increase unit stability. Gas shocks are completely hidden for safer bed retraction preventing injuries to hands and fingers. Product shall be suitable for processing by any approved recycling facility. Unit is manufactured with FDA approved plastic (FDA 21 CFR 177.1520 (c) 3.1). Unit is provided with a self-adhesive sign for installation on restroom door. Unit is oval in design. Unit should contain a manufactured date molded into the unit visible when the unit is installed. The Baby Station is protected by **Columbia Guard**, an antimicrobial agent that is added to the processing. **Columbia Guard** protects against growth of microorganisms such as algae, bacteria, fungi and staph. Columbia Guard also reduces product deterioration due to premature degradation, odor, biofilm, discoloration and staining, it is non-migratory, inorganic (Silver), and is FDA and EPA registered.

OPERATION: Unit shall be equipped with a safety belt. Unit bed should be horizontal in design to prevent child from rolling off bed. Unit should contain a concave changing surface to ensure child's comfort and protection. Provide unit with dual dispensers for bed liners. Instructions should contain full color universal characters and written in English, German, French and Spanish to facilitate multilingual understanding, contrasting in color and be molded into unit to prevent peeling, fading or vandalism.

INSTALLATION: Manufacturer will provide units with the necessary hardware to install on most wall types. Unit should protrude no more than 4" from the wall in its closed position and less than 20" when fully open. Unit should be adaptable to 16" or 24" stud wall construction with punch-out pre-drilled holes. Unit should be equipped with a molded-in diaper bag hook. Design should allow for easy passage around unit and contain no sharp corners to injure customers. Unit should comply with the following ADA Accessibility Guidelines when applicable and installed to the manufacturer's specifications: 4.4.1 Protruding Objects, 4.2.5 Forward Reach, 4.2.6 Side Reach, 4.23.3 and 4.23.7 Fixtures, 4.32.3 Knee Clearances at Counter and 4.32.4 Height of Counters. Unit should contain a manufacturer's item number and date wheel molded into unit, which is visible when mounted.

The manufacturer reserves the right, without formal notification, to implement changes to the design and dimensions.
© 2008 Columbia Accessories
Edition: BS-313/314-400/001



PO Box 181, Columbia, SC 29202
Phone: 1-866-820-3579 Fax: 1-866-317-2786
Web Site: <http://www.natpart.com>