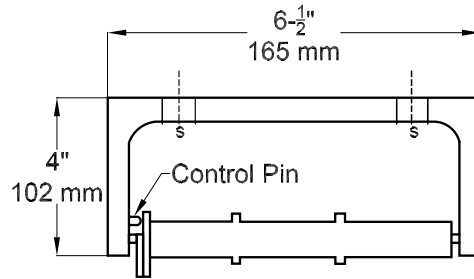




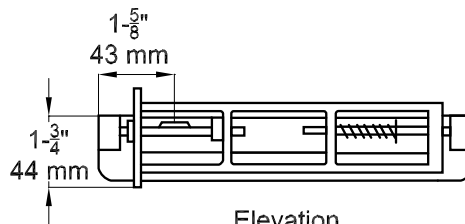
# TT-110-200

## Technical Data Sheet

### Single Roll Toilet Paper Holder Surface Mounted



Top View



Elevation

**MATERIALS:** Surface Mounted Single Roll Toilet Paper Holder fabricated of cast aluminum with a satin matte silver-gray finish.

**CAPACITY:** One standard tissue roll

**OVERALL SIZE:** 6 1/2" W x 1 3/4" H x 4" D  
(165 mm W x 44 mm H x 102 mm D)

**SPECIFICATIONS:** Surface Mounted Single Roll Toilet Paper Holder with controlled delivery holds and dispenses all standard core roll tissue, up to 6" (152 mm) in diameter and will be fabricated of cast aluminum with a satin matte silver-gray finish. The "no waste" rocking action spindle to be fabricated of impact resistant, ABS thermoplastic and be theft resistant with a concealed release mechanism. Spindle rotates 1/2 revolution for each operation and return to its original position. Roll core will not be removable until tissue is exhausted.

**INSTALLATION:** Unit is surface mounted on wall or partition using self tapping screws (by others). For compliance with ADA Accessibility Guidelines, unit should be installed so that tissue roll centerline is between 44" (1118mm) maximum above finished floor (AFF) and 19" (483mm) minimum AFF.

The manufacturer reserves the right, without formal notification, to implement changes to the design and dimensions.  
© 2008 Columbia Accessories  
Edition: TT-110-200/001



PO Box 181, Columbia, SC 29202  
Phone: 1-866-820-3579 Fax: 1-866-317-2786  
Web Site: <http://www.natpart.com>