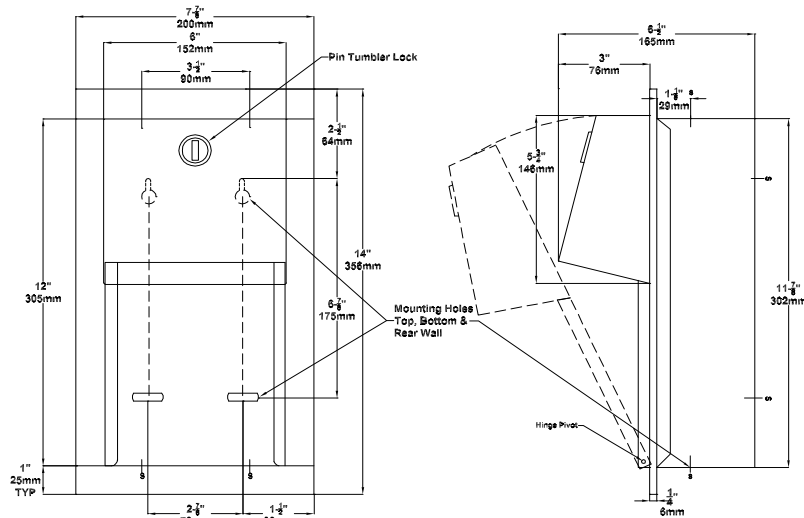




TT-241-200

Technical Data Sheet

Twin Hide-a-Roll Tissue Dispenser Recessed Mounted



MATERIALS: 18-8 stainless steel, type 304, 18 gauge, door, door frame, and dispensing mechanism guide tracks fabricated; cabinet body to have same grade, 22 gauge. All exposed surfaces to be No. 4 satin finish.

CAPACITY: Two standard tissue rolls

OVERALL SIZE: 7 7/8" W x 14" H x 6 1/2" D
(200 mm W x 356 mm H x 165 mm D)

WALL OPENING: 6 1/4" W x 12" H x 3 1/2" D
(159 mm W x 305 mm H x 89 mm D)

SPECIFICATIONS: Recessed Mounted Twin Hide-A-Roll Toilet Tissue Dispenser holds and dispenses two (2) standard or two (2) 5-1/4" diameter 1800 sheets tissue rolls and will have door, door frame, and dispensing mechanism guide tracks fabricated of alloy 18-8 stainless steel, type 304, 18 gauge; cabinet body to have same grade, 22 gauge. All exposed surfaces to be No. 4 satin finish and be protected during shipment with a PVC film, removable after installation. Internal mechanism levers to be fabricated of molded high-impact resistant plastic for smooth operation. Structural assembly of body and door components to be of welded construction. Door hinge will be of heavy-duty stainless steel 3/16" diameter rivets. Door will be held closed with a tumbler lock. Vandal resistant rollers shall be of molded high-impact resistant plastic with integral molded-in stainless steel end pins and two (2) rollers will be supplied.

INSTALLATION: Unit is recessed mounted in wall using four (4) No. 10 self tapping screws (by others). Top two mounting holes through back are "keyhole" slots for ease in hanging unit on pre-installed screws. Bottom two mounting holes are horizontal slots for ease of adjustment. Alternate mounting holes are provided in top and bottom of unit for installation convenience. For compliance with ADA Accessibility Guidelines, top of unit should be installed 29" above finished floor.

The manufacturer reserves the right, without formal notification, to implement changes to the design and dimensions.
© 2008 Columbia Accessories
Edition: TT-241-200/001



PO Box 181, Columbia, SC 29202
Phone: 1-866-820-3579 Fax: 1-866-317-2786
Web Site: <http://www.natpart.com>