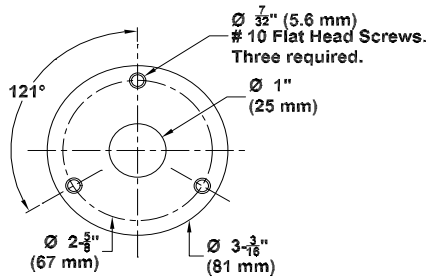




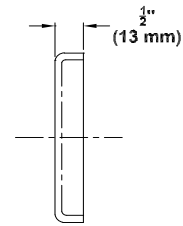
# RD-111-200

## Technical Data Sheet

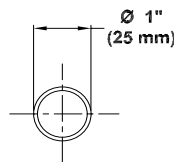
### Stainless Steel Shower Rod W/ Flange



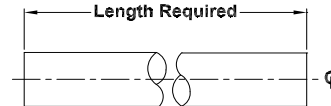
**Front View  
Shower Curtain Rod Flange**



**Front View  
Shower Curtain Rod Flange**



**Front View  
Shower Curtain Rod**



**Front View  
Shower Curtain Rod**

**Specifications:** Unit is fabricated of alloy 18-8 stainless steel, type 304. Tubing is 20 gauge with 1" diameter measurement. The curtain rod and flanges have a satin finish. Three 13/64" (5.18 mm) diameter holes are pre-punched into flange. (Screws will not be furnished by Columbia Accessories).

**Shower Rod Dimensions:** 1" Diameter x 60" Length  
(25.4 mm Diameter x 1524 mm Length)

**Shower Rod Flange Dimensions:** 3" Diameter  
(76 mm Diameter)

**Installation:** Shower curtain rod (60" straight rod) is installed between (2) two mounting flanges. The SH-111-200 model number references the Columbia Accessories standard shower curtain hooks. With the hooks installed, 67" (1701.80 mm) is recommended as the measurement above rim of tub. This will allow a 6" (152.4 mm) cover at the edge of the tub rim.

The manufacturer reserves the right, without formal notification, to implement changes to the design and dimensions.  
© 2008 Columbia Accessories  
Edition: RD-111-200/001



PO Box 181, Columbia, SC 29202  
Phone: 1-866-820-3579 Fax: 1-866-317-2786  
Web Site: <http://www.natpart.com>