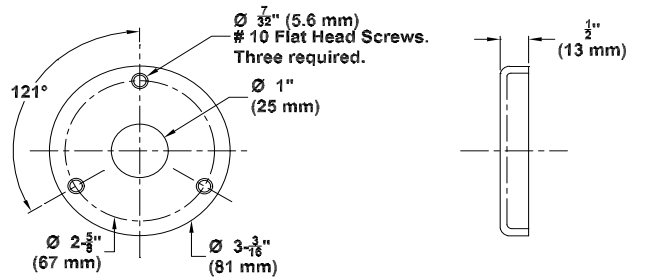




RF-111-200

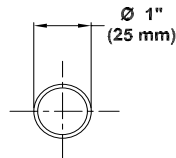
Technical Data Sheet

Stainless Steel Shower Rod Flange (Pair)

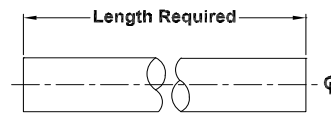


Front View
Shower Curtain Rod Flange

Front View
Shower Curtain Rod Flange



Front View
Shower Curtain Rod



Front View
Shower Curtain Rod

SPECIFICATION: Heavy Duty Flanges are 3" (76.2 mm) in diameter, 20 guage type 304 stainless steel. Three 13/64" (5.18 mm) diameter holes are pre-punched into flange. (Screws will not be furnished by Columbia Accessories). All exposed surfaces have a satin finish.

INSTALLATION: Flanges fit over the ends of a 1" (25.4 mm) diameter shower curtain rod. Flanges attach to wall with screws. Screws are to fit into the pre-punched holes that are 13/64" (5.18 mm) in diameter.

The manufacturer reserves the right, without formal notification, to implement changes to the design and dimensions.
© 2008 Columbia Accessories
Edition: RF-111-200/001



PO Box 181, Columbia, SC 29202
Phone: 1-866-820-3579 Fax: 1-866-317-2786
Web Site: <http://www.natpart.com>